



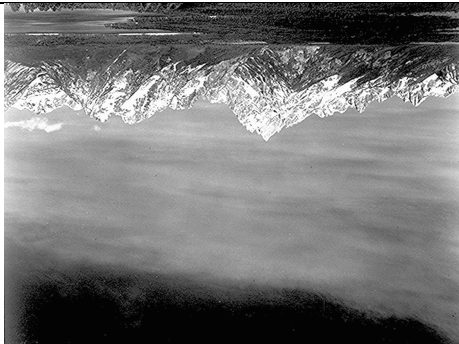
Isthmus — a narrow piece of land that connects two larger pieces of land

<http://www.archives.gov/pacific/education/images/catalina-isthmus-m.gif>



Plateau — a flat elevated landform

<http://www.ut.blm.gov/monument/images/vegetation/seamn-wash-plateau.jpg>



Mountain — a rounded or pointed elevated landform

<http://www.archives.gov/research/ansel-adams/images/aag09.jpg>



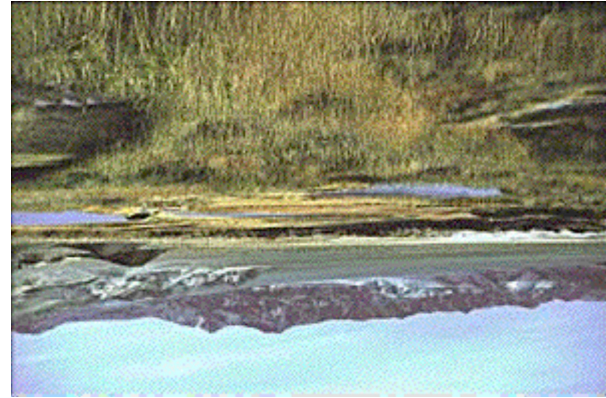
Foothills — small hills at the foot of mountains

<http://www.iep.ca.gov/suisun/photos/MarshViews/Foothills.jpg>



Valley — low elevated land between mountains

http://lvo.wr.usgs.gov/4277033_L.jpg



Oasis — a fertile desert water hole

<http://www2.nature.nps.gov/geology/usgsnps/deva/Sar.jpg>



Dune — sand drifts

http://www.epa.qld.gov.au/images/nature_conservation/dunes.jpg



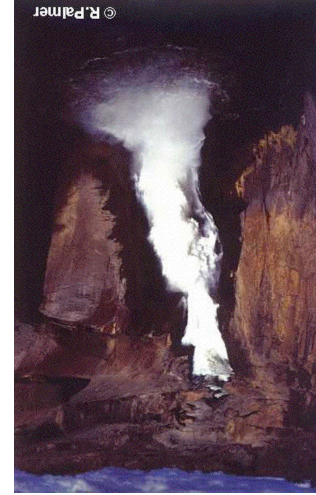
Canyon — deep narrow valley with high cliffs

<http://rst.gsfc.nasa.gov/Sect6/grand-canyon-1999a.jpg>



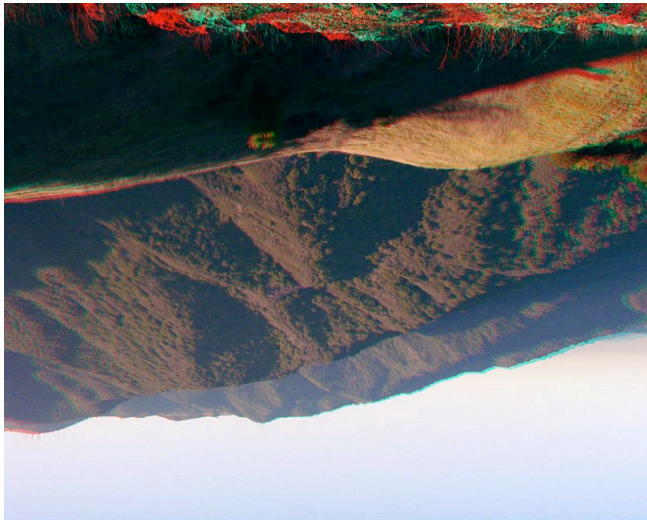
Tributary — smaller stream that flows into a bigger stream

<http://wfrs.usgs.gov/research/genetics/images/strodriguez1bridgecreek.jpg>



Waterfall — water flowing over a cliff

<http://www.dwaf.gov.za/orange/images/web611.jpg>



Peak — pointed mountain top

<http://3dparks.wr.usgs.gov/3Dbayarea/images2/BaldMtn5.jpg>



Beach — sandy shore

<http://www.biliran.gov.ph/images2/Whitesanded%20Beach%20of%20Sambawan%20Islets,%20Maripipi1.jpg>



River — a large natural stream of water emptying into a larger body

<http://www.fws.gov/northeast/wallkillriver/images/river.jpg>



Harbor — a protected inlet

<http://sq150.cawg.cap.gov/harbor.jpg>



Reef — a rock or coral ridge at or near sea level

<http://pubs.usgs.gov/fs/2002/fs025-02/images/diver.jpg>



Cape — a piece of land extending into a lake or sea

http://www.nps.gov/caha/images/150x150_CAHA_Lighthouse_aerial.jpg



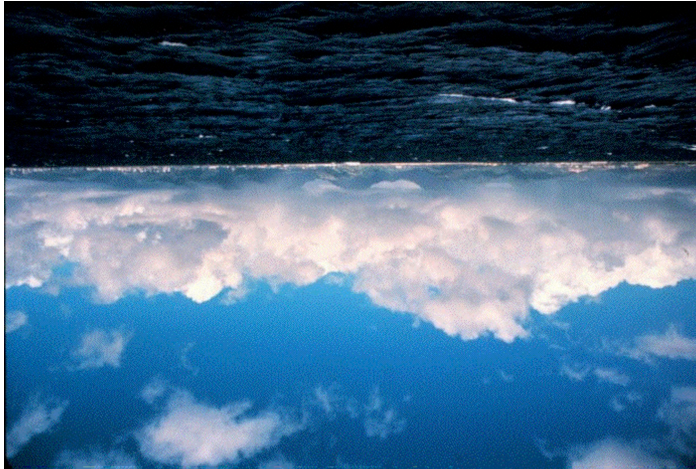
Desert — a region that receives less than 10" of rain per year

http://www.ezec.gov/ezec/PhotoWeb/DesertCommunitiesEZ8-14-00View_of_Zone_Near_Indio.jpg



Sea — an extension or arm of an ocean located close to land

http://www8.nos.noaa.gov/ExploreInv/photos/nps_apostleisle_p.jpg



Ocean — large body of salt water

<http://sealevel.jpl.nasa.gov/overview/images/ocean-clouds.jpg>



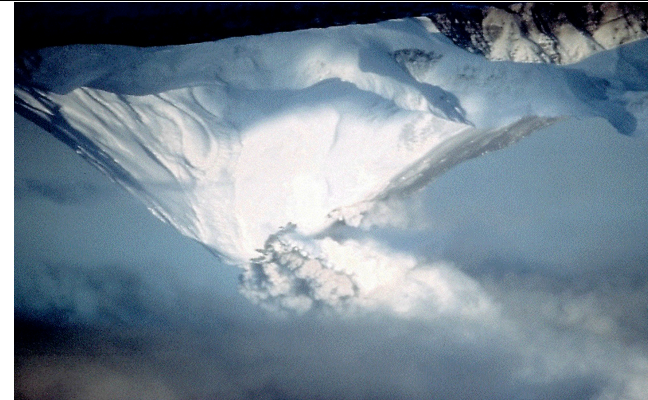
Hill — small, rounded elevated landform

http://pubs.usgs.gov/info/loess/hills_corn.jpg



Lagoon — enclosed shallow body of water

http://www.rpdc.tas.gov.au/soer/image/529/cem_habitat/p-est_southport-lagoon-m.jpg



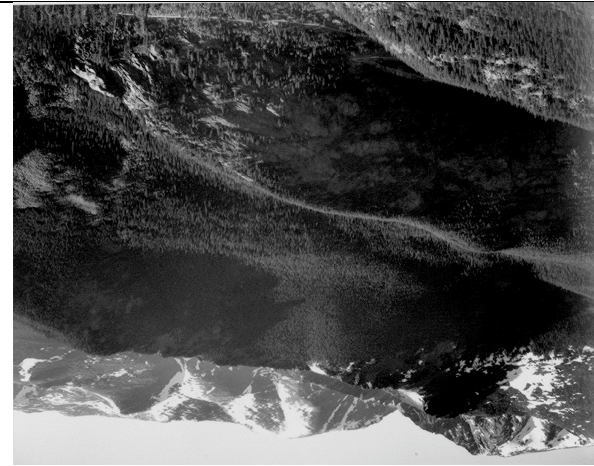
Volcano — opening (usually a hill or mountain) in the earth's crust where gases, and molten (melted) rock pour out

http://volcanoes.usgs.gov/Images/Jpg/Kanaga/dds40-097_med.jpg



Lake — a body of fresh water surrounded by land

http://vulcan.wr.usgs.gov/Images/Jpg/CraterLake/crater_lake_aerial.jpg



Timberline — top area of a mountain where trees do not grow

<http://www.archives.gov/research/ansel-adams/images/aam07.jpg>



Cliff — a high, steep face of the mountain, or land

http://education.usgs.gov/common/lessons/images/36n115w_cliff.jpg