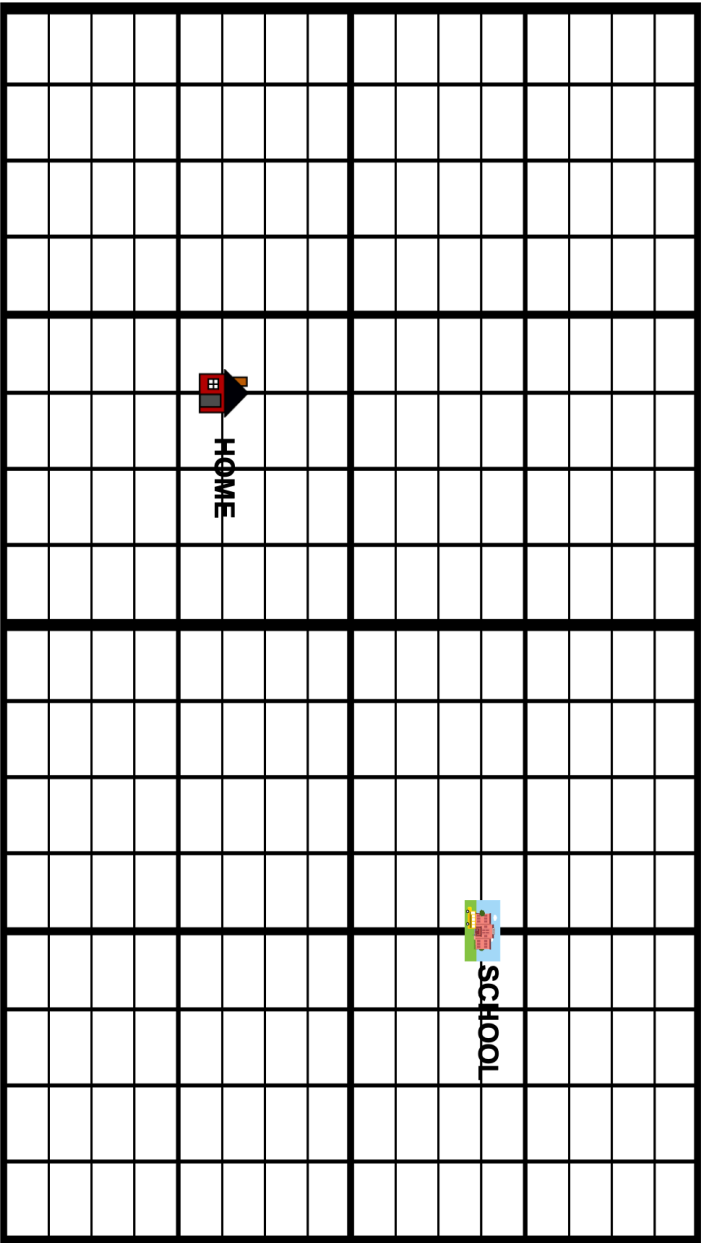


# Home to School Map

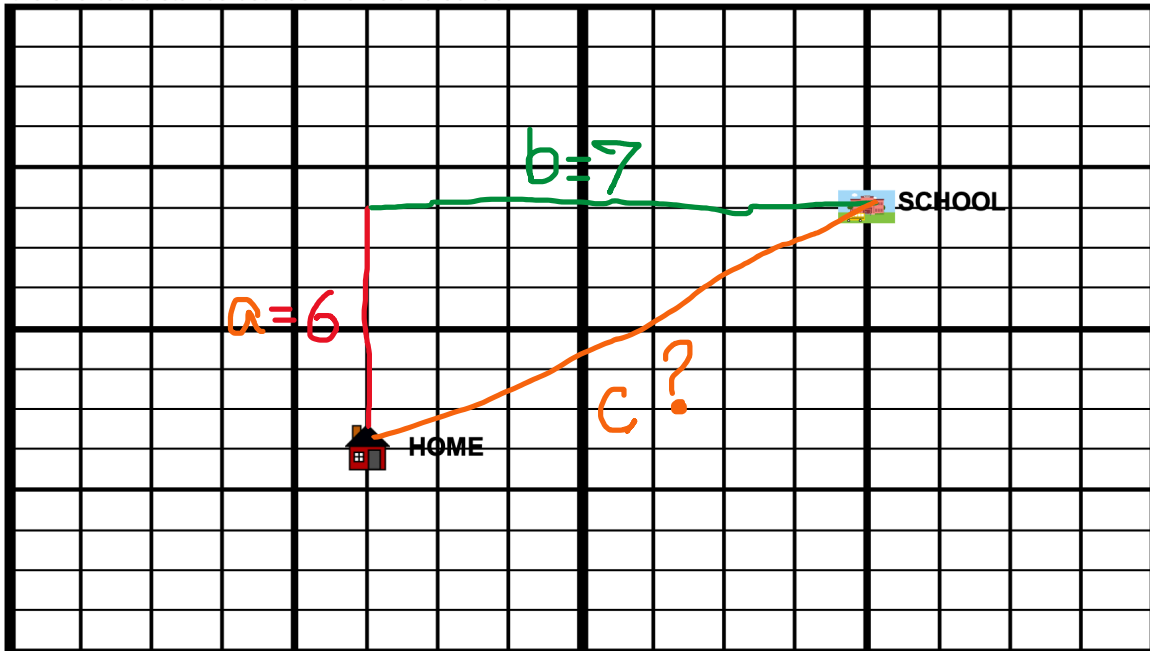
Name \_\_\_\_\_

Find the shortest distance between home and school.



## Answer Key

Find the shortest distance between home and school.



Solution to the question

$$\begin{aligned}c^2 &= a^2 + b^2 \\c^2 &= 6^2 + 7^2 \\c^2 &= 36 + 49 \\c^2 &= 85 \\c &= \sqrt{85} \\c &= 9.22\end{aligned}$$

**Volcano Information**

Name \_\_\_\_\_

<b>Name of the Volcano</b>	<b>Location of the Volcano (nearest city &amp; name of country)</b>	<b>Elevation</b>	<b>What impact is the volcano having on the world?</b>	<b>Describe how the volcano looks in Google Earth.</b>
<b>Volcano 1</b>				
<b>Volcano 2</b>				

**Citations:**

**Scoring Guide for Map Work and Graphic Organizer Name \_\_\_\_\_**

<b>Map Work Requirements</b>	<b>Points Possible</b>	<b>Points Earned</b>
2 volcanoes are located and labeled properly on the map	10	
Hypotenuse (shortest distance between the volcanoes) is figured correctly using Pythagorean Theorem	15	
<b>Graphic Organizer Requirements</b>	<b>Points Possible</b>	<b>Points Earned</b>
Names of 2 volcanoes are given	5	
Nearest cities and names of countries are identified correctly	10	
Correct elevation is given for both volcanoes	10	
The impact of both active volcanoes is stated	20	
The volcanoes as viewed on Google Earth are well-described	20	
Correct grammar/mechanics	10	
<b>Total</b>	<b>100</b>	

**Comments**