

Hike to Indian Garden - Photographs

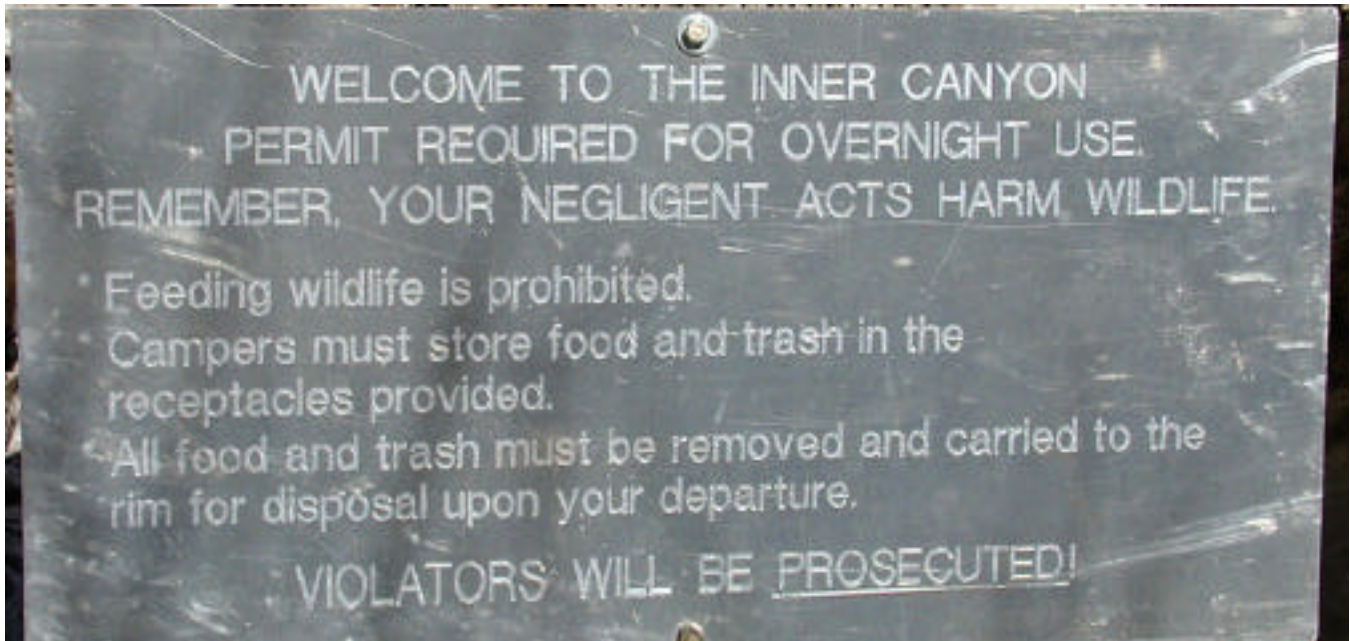
Courtesy of Niccole Cerveny

These photographs show what you might see along the trail as you hike the Bright Angel Trail.

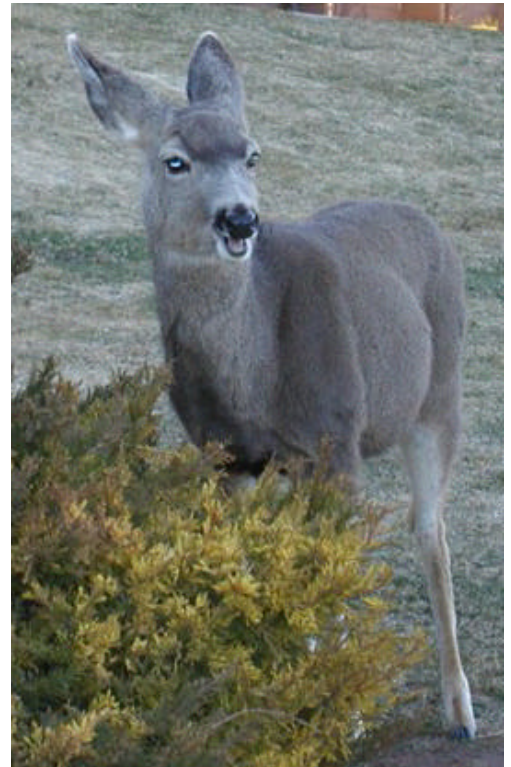


(The location is found at "A" on the labeled map)

The top photo shows the area where you start up the Bright Angel Trail. Your boat will probably stop at the Boat Beach.



You will have to follow the rules of the trail on your hike. So no matter how cute they look, don't feed them!





(The location of this photograph is found at "B" on the labeled map)
There are many places along the Bright Angel Trail where the hiker must balance across a rock path over a trickling creek. It is funny how the sweatiest, dirtiest hikers try not to add mud to their boots.



The location of this photograph is found at "C" on the labeled map)
The waterfall at the bottom of the Devil's Cork Screw is not spectacular, but it is a reliable trickle.



(The location of this photograph is found at "D" on the labeled map)
The Devil's Cork Screw consists of some brutal switchbacks along the Bright Angel Trail. The hiker is very happy to put these behind them!



(The location of this photograph is found at "E" on the labeled map)
When you're done with the Devil's Cork Screw, you can cool off at this spot. Just be careful, because there is a VERY sheer drop off just below.



(The location of this photograph is found at "F" on the labeled map)
This is a typical view of Garden Creek along the Bright Angel Trail. You are getting close to Indian Garden.



You will see Mule Trains like these along the trail. They carry supplies and visitors.



(The location of this photograph is found at "G" on the labeled map)
When you start to see these cottonwood trees, you know you are almost to Indian Garden.



On your trip to Indian Garden, you know that you will have a great experience with great views of Arizona's most famous place, the Grand Canyon.

