

Name _____ Date _____ Pd _____

Northern Hemisphere Map Activity I

Plesetsk was a base north of Moscow in the Soviet Union built to launch Intercontinental Ballistic Missiles (ICBM) over the Arctic Circle and target U.S. cities. In 1962 the main ICBM housed in Plesetsk was the R-7 ICBM. The missile had a range of 5,000 miles. Using the map of the Northern Hemisphere, a ruler, and the scale; decide if the missile could hit the following U. S. cities. Put an X on the line if the city is within range of the R-7

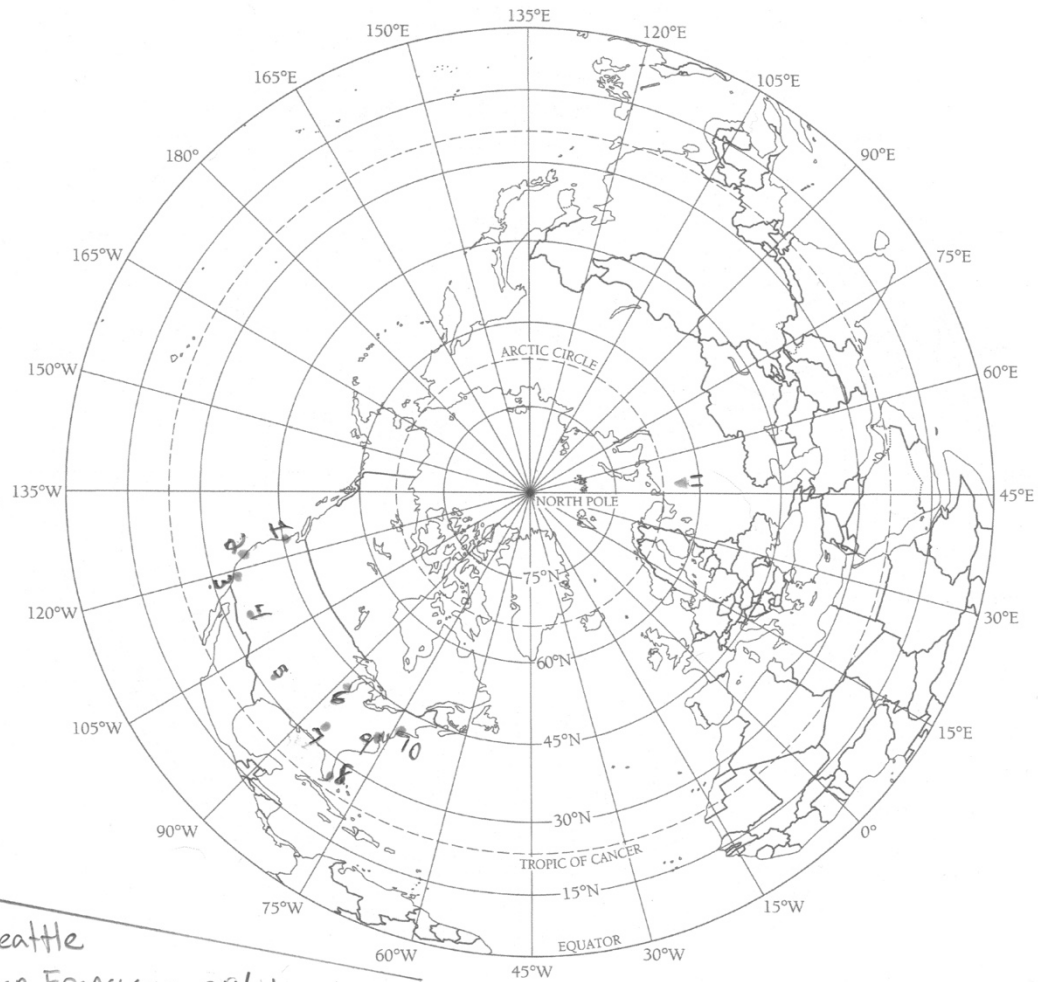
Seattle	_____
San Francisco	_____
Los Angeles	_____
Phoenix	_____
Dallas	_____
Chicago	_____
Atlanta	_____
Miami	_____
Washington D.C.	_____
New York	_____

Northern Hemisphere Map Activity I **Answer Key**

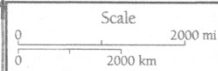
Plesetsk was a base north of Moscow in the Soviet Union built to launch Intercontinental Ballistic Missiles (ICBM) over the Arctic Circle and target U.S. cities. In 1962 the main ICBM housed in Plesetsk was the R-7 ICBM. The missile had a range of 5,000 miles. Using the map of the Northern Hemisphere, a ruler, and the scale; decide if the missile could hit the following U. S. cities. Put an X on the line if the city is within range of the R-7

Seattle	<u> X </u>
San Francisco	<u> </u>
Los Angeles	<u> </u>
Phoenix	<u> </u>
Dallas	<u> </u>
Chicago	<u> X </u>
Atlanta	<u> </u>
Miami	<u> </u>
Washington D.C.	<u> X </u>
New York	<u> X </u>

NORTHERN HEMISPHERE



- | | |
|-----------------|--------------|
| 1 Seattle | |
| 2 San Francisco | 9 Washington |
| 3 Los Angeles | 10 New York |
| 4 Phoenix | 11 Plesetsk |
| 5 Dallas | |
| 6 Chicago | |
| 7 Atlanta | |
| 8 Miami | |
- Location Key



Section 6: Outline Maps • 303

Name _____ Date _____ Pd _____

North America Map Activity II

American U-2 spy planes reported Soviet missile bases being built in Cuba. The first missile site discovered contained Soviet R-12 Medium Range Ballistic Missile (MRBM). The R-12 had a range of 1,500 miles. Shortly after the R-12s were discovered, American spy planes discovered the Soviet R-14 with a range of 3,100 miles. Using the map of North America, a ruler, and the scale decide which cities the Soviet Union could now target in the U.S.

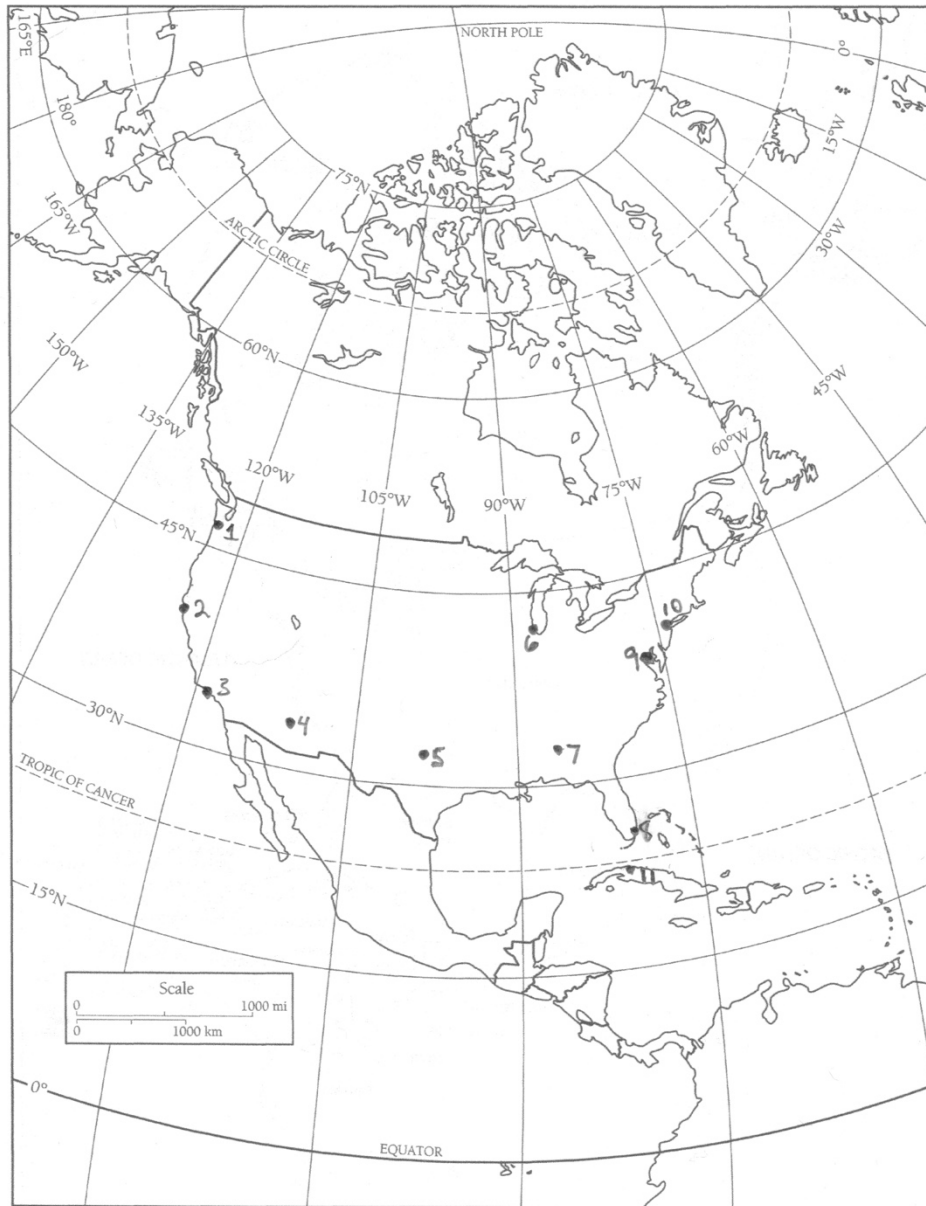
City	R-12	R-14
Seattle	_____	_____
San Francisco	_____	_____
Los Angeles	_____	_____
Phoenix	_____	_____
Dallas	_____	_____
Chicago	_____	_____
Atlanta	_____	_____
Miami	_____	_____
Washington D.C.	_____	_____
New York	_____	_____

North America Map Activity II **Answer Key**

American U-2 spy planes reported Soviet missile bases being built in Cuba. The first missile site discovered contained Soviet R-12 Medium Range Ballistic Missile (MRBM). The R-12 had a range of 1,500 miles. Shortly after the R-12s were discovered, American spy planes discovered the Soviet R-14 with a range of 3,100 miles. Using the map of North America, a ruler, and the scale decide which cities the Soviet Union could now target in the U.S. Put an X on the line if the city is within range of the missile.

City	R-12	R-14
Seattle	_____	_____
San Francisco	_____	__X__
Los Angeles	_____	__X__
Phoenix	_____	__X__
Dallas	__X__	__X__
Chicago	__X__	__X__
Atlanta	__X__	__X__
Miami	__X__	__X__
Washington D.C.	__X__	__X__
New York	__X__	__X__

NORTH AMERICA



Location Key		
1 Seattle	5 Dallas	9 Washington
2 San Francisco	6 Chicago	10 New York
3 Los Angeles	7 Atlanta	11 San Cristobal
4 Phoenix	8 Miami	

Section 6: Outline Maps • 305

Intelligence Report Scoring Guide

You have been asked to write an intelligence report for the President of the United States. The report must include the following information:

First paragraph

Date of missile discovery (1 Point)

Locations of the missiles. Be specific as possible. (1 Point)

Locations where the missile can/cannot hit (1 Point)

Second Paragraph

Do you think the President should inform the public about the missiles? Include 2 reasons to explain your choice. (3 Points)

Third Paragraph

What course of action do you think the President should take?

A. Do nothing

B. Use diplomatic pressure to get the Soviet Union to remove the missiles.

C. Complete an air attack on the missile sites.

D. Undertake a full military invasion of Cuba

E. Undertake a full military invasion of the Soviet Union

F. Use the navy to prevent any more missiles from entering Cuba

Include reasons to explain your choice. (3 Points)

One more point will be awarded for proper spelling and grammar

Site Pic1

San Cristobal Cuba

https://www.cia.gov/library/center-for-the-study-of-intelligence/csi-publications/csi-studies/studies/vol49no4/Photo_Gap_2.htm



Observe	Reflect	Question
<p>What is the form of the image (painting, print, photograph, drawing)?</p> <p>What dates are on the image?</p> <p>Are there objects in the image? Do you recognize them? What are they used for?</p> <p>Describe the landscape and physical features in the image.</p>	<p>Describe the spatial patterns illustrated in this image. These patterns might be in the people, transportation, buildings, or landscape.</p> <p>What is the most likely purpose (audience) for this image?</p> <p>What inferences or connections can you make from the image?</p>	<p>Why is this image significant?</p> <p>How is this image connected to other documents, maps, recordings, images, or artifacts?</p>

Site Pic 2
San Cristobal Cuba

https://en.wikipedia.org/wiki/File:U2_Image_of_Cuban_Missile_Crisis.jpg



Observe	Reflect	Question
<p>What is the form of the image (painting, print, photograph, drawing)?</p> <p>What dates are on the image?</p> <p>Are there objects in the image? Do you recognize them? What are they used for?</p> <p>Describe the landscape and physical features in the image.</p>	<p>Describe the spatial patterns illustrated in this image. These patterns might be in the people, transportation, buildings, or landscape.</p> <p>What is the most likely purpose (audience) for this image?</p> <p>What inferences or connections can you make from the image?</p>	<p>Why is this image significant?</p> <p>How is this image connected to other documents, maps, recordings, images, or artifacts?</p>

Site Pic 3

San Cristobal Cuba

<https://todayinhistory.blog/2017/10/22/october-22-1962-cuban-missile-crisis/missile-launch-site-in-cuba/>

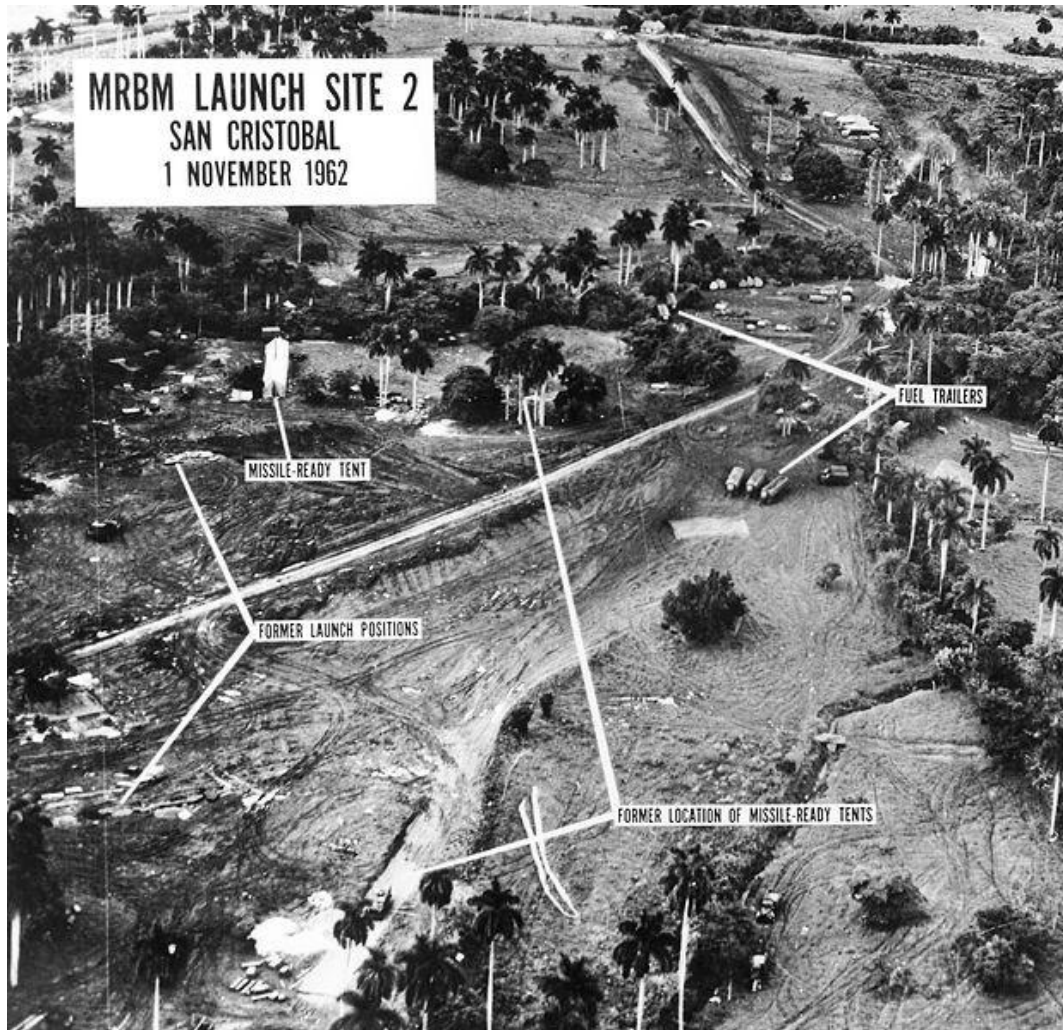


Observe	Reflect	Question
<p>What is the form of the image (painting, print, photograph, drawing)?</p> <p>What dates are on the image?</p> <p>Are there objects in the image? Do you recognize them? What are they used for?</p> <p>Describe the landscape and physical features in the image.</p>	<p>Describe the spatial patterns illustrated in this image. These patterns might be in the people, transportation, buildings, or landscape.</p> <p>What is the most likely purpose (audience) for this image?</p> <p>What inferences or connections can you make from the image?</p>	<p>Why is this image significant?</p> <p>How is this image connected to other documents, maps, recordings, images, or artifacts?</p>

Site Pic 4

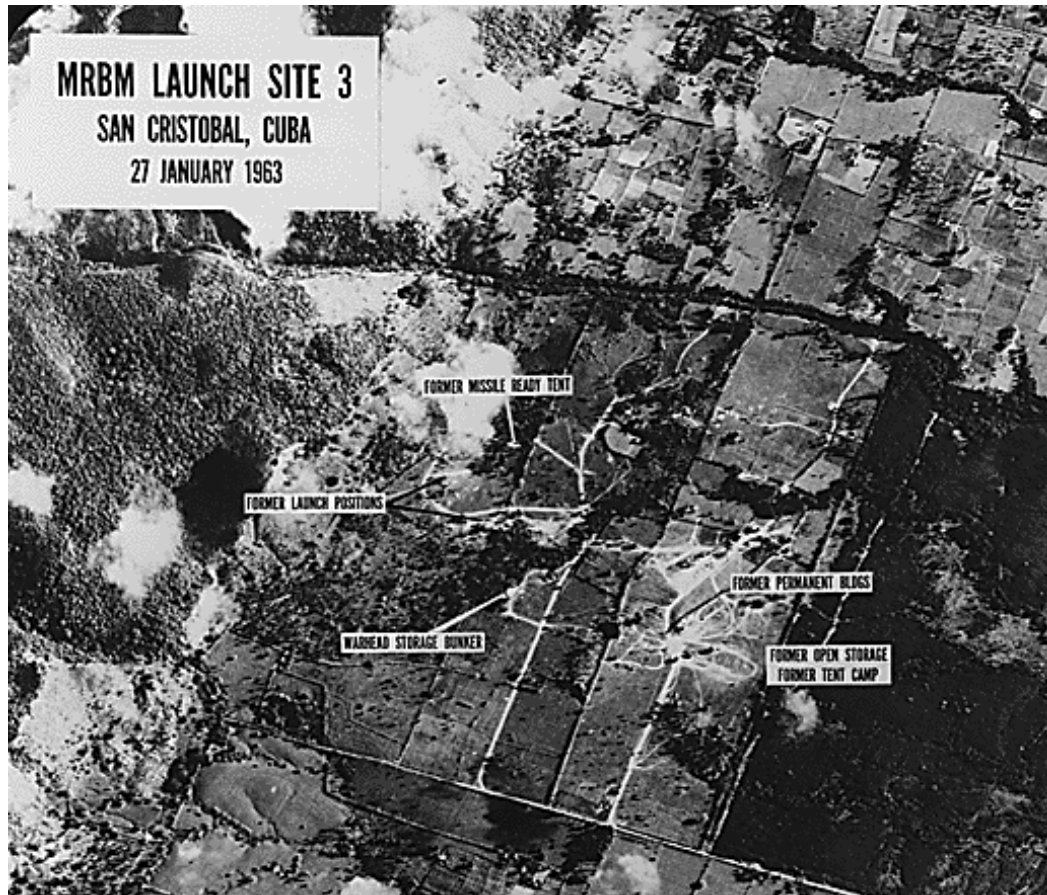
San Cristobal Cuba

<https://www.guardian-series.co.uk/news/15985274.plea-do-you-remember-the-walthamstow-carnival-in-1962/>



Observe	Reflect	Question
<p>What is the form of the image (painting, print, photograph, drawing)?</p> <p>What dates are on the image?</p> <p>Are there objects in the image? Do you recognize them? What are they used for?</p> <p>Describe the landscape and physical features in the image.</p>	<p>Describe the spatial patterns illustrated in this image. These patterns might be in the people, transportation, buildings, or landscape.</p> <p>What is the most likely purpose (audience) for this image?</p> <p>What inferences or connections can you make from the image?</p>	<p>Why is this image significant?</p> <p>How is this image connected to other documents, maps, recordings, images, or artifacts?</p>

Site Pic 5
San Cristobal Cuba
<https://verlaan1.home.xs4all.nl/cuba/missile-crisis.html>



Observe	Reflect	Question
<p>What is the form of the image (painting, print, photograph, drawing)?</p> <p>What dates are on the image?</p> <p>Are there objects in the image? Do you recognize them? What are they used for?</p> <p>Describe the landscape and physical features in the image.</p>	<p>Describe the spatial patterns illustrated in this image. These patterns might be in the people, transportation, buildings, or landscape.</p> <p>What is the most likely purpose (audience) for this image?</p> <p>What inferences or connections can you make from the image?</p>	<p>Why is this image significant?</p> <p>How is this image connected to other documents, maps, recordings, images, or artifacts?</p>

Name _____ Date _____ Pd _____

Final Assessment

Write **True** or **False** on the line provided to answer the question.

- _____ 1. The Soviet Union claimed the missiles in Cuba were not “offensive weapons.”
- _____ 2. When launching missiles from the Soviet Union, they could not reach the city of Los Angeles.
- _____ 3. When launching missiles from Cuba, they could reach every city in the United States.
- _____ 4. In response to the buildup of weapons on Cuba, the United States issued air strikes to take out the missile sites.
- _____ 5. In order to make the Soviet Union remove the missiles, the United States removed missiles from Turkey.

Final Assessment **Answer Key**
Mapping a Crisis

Write **True** or **False** on the line provided to answer the question.

___ T ___ 1. The Soviet Union claimed the missiles in Cuba were not “offensive weapons.”

___ F ___ 2. When launching missiles from the Soviet Union, they could not reach the city of Los Angeles.

___ F ___ 3. When launching missiles from Cuba, they could reach every city in the United States.

___ F ___ 4. In response to the build up of weapons on Cuba, the United States issued air strikes to take out the missile sites.

___ T ___ 5. In order to make the Soviet Union remove the missiles, the United States removed missiles from Turkey.

Possible Outcomes

A. The United States does nothing

If the United States does nothing the Soviet Union gains more prestige around the globe. China and the Soviet Union become closer allies--giving the communist bloc countries more prestige in world.

B. Use diplomatic pressure to get the Soviet Union to remove the missiles

Soviet Premier Nikita Khrushchev, not wanting to appear weak, does not remove the missiles from Cuba. The United Nations reprimands the Soviet Union but fails to do much else.

C. An air attack on the missile sites

Some U.S. planes are successful in their mission, while others are shot down. The Soviet Union retaliates by attacking Berlin in Germany. These actions prompt a battle in Europe between United Nations and Warsaw Pact troops, dragging the world into a new World War.

D. A full military invasion of Cuba

The United States launches an attack on Cuban soil. Cuban field generals with prior orders, use nuclear weapons against the United States.

E. A full military invasion of the Soviet Union

The United States launches an attack on Soviet soil. The United Nations fails to back up the United States in its attack.

F. Use the navy to prevent any more missiles to enter

This is the actual choice made by President Kennedy. Realizing that a blockade is an act of war, Kennedy issues a quarantine stopping ships that may contain nuclear cargo.

Message from Khrushchev

"You are disturbed over Cuba. You say that this disturbs you because it is ninety miles by sea from the coast of the United States of America. But... you have placed destructive missile weapons, which you call offensive, in Turkey, literally next to us... I therefore make this proposal: We are willing to remove from Cuba the means which you regard as offensive... Your representatives will make a declaration to the effect that the United States ... will remove its analogous means from Turkey ... and after that, persons entrusted by the United Nations Security Council could inspect on the spot the fulfillment of the pledges made."

End Game

The Soviet Union publicly announces they are going to remove the missiles from Cuba. President Kennedy secretly agrees to remove the missiles from Turkey. Since Premier Khrushchev seems to have gotten nothing from the Americans and is embarrassed at home; he is eventually removed from power.