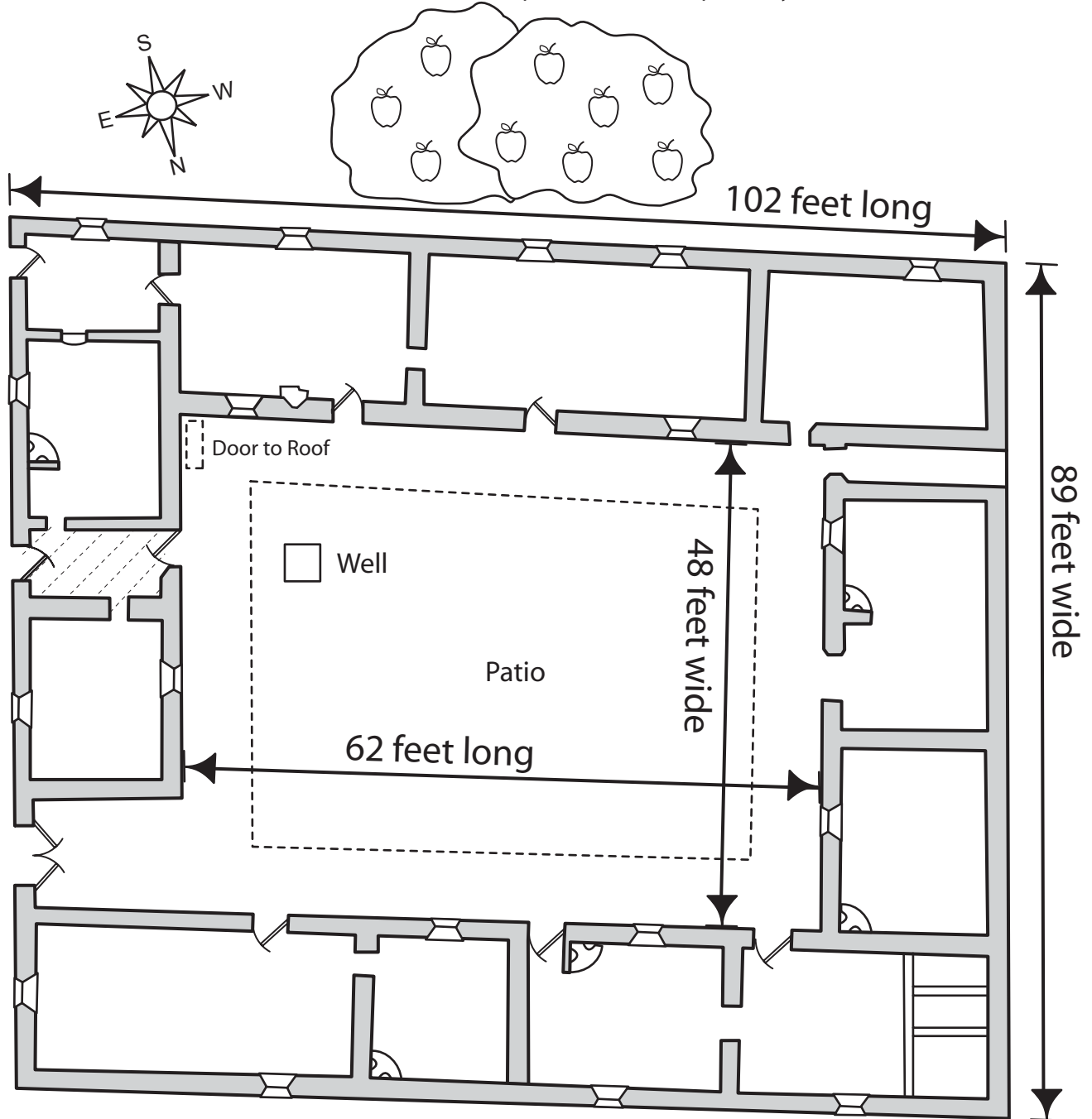
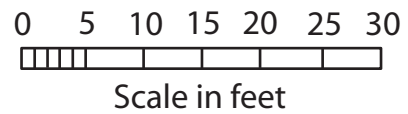


# Plan of a Traditional Adobe House

Floor plan of the Martinez house near Taos, NM. The earliest part of the house probably dates to about 1800.



	Constructed from adobe		Door
	Wood flooring - all other floors are dirt		Fireplace
	Window. The interior windows were created first. Exterior windows were added after 1828.		



Source: National Park Service  
<http://www.cr.nps.gov/nr/twhp/www/ps/lessons/96ranchos/96ranchos.htm>

Courtesy: Arizona Geographic Alliance <http://geoalliance.asu.edu/azga>  
 School of Geographical Sciences and Urban Planning  
 Arizona State University  
 Cartographer Becky L. Eden

Adobe\_House.PDF03