

Name _____

Date _____

Gallery Walk Reaction Log

Look at each picture and read each piece of information. In the row that matches the document number you are viewing, respond first with a description telling if you are familiar with the document or not, then provide a reaction to how the document makes you feel or think. You may draw an emoji, write a word, a sentence, or draw a picture for the reaction.

Document	Have I heard/seen this before?	My Reaction
1		
2		
3		
4		
5		
What questions do you have after viewing these documents?		

Gallery Photos:



Telegraph Fire Arizona Burnout operation in the Oak Flat area on the Telegraph Fire 6-6-21
https://commons.wikimedia.org/wiki/File:Telegraph_Fire,_Arizona.jpg



The Acoma Fire Crew burn piles of heavy fuels to improve control lines along the Ikes Fire Planning Area perimeter. https://commons.wikimedia.org/wiki/Category:Wildfires_in_Arizona#/media/File:Acoma_Fire_Crew_at_Ikes_Fire.jpg

Gallery Photos:



A wildfire burning in northern Arizona has burned more than 7,000 acres. A lightning strike started the Ikes Fire near the Grand Canyon on the Kaibab Plateau in late July.
https://commons.wikimedia.org/wiki/File:Ikes_Fire_Closeup.jpg



Sedona Brins Fire 2006
https://commons.wikimedia.org/wiki/File:Sedona_Brins_Fire_2006.jpg

Gallery Photos:



Backbone fire burning near the CDP's of Strawberry and Pine
https://commons.wikimedia.org/wiki/File:Backbone_fire.jpg



Aerial firefighting with a Sikorsky CH-54 helicopter at Prescott National Forest in June 30, 2008
https://commons.wikimedia.org/wiki/Category:Fires_in_Prescott_National_Forest#/media/File:Firefighting,_Prescott_National_Forest_wildfire_in_2008.jpg

Gallery Photos:



A photograph of a well-developed Pyrocumulus cloud produced by a bushfire in the [Gila River valley](#) southwest of Phoenix, Arizona. The charred trail left by the fire front can be seen in the background behind the [Sierra Estrella](#). This picture was taken from a Piper Warrior at 5500 feet over [Rainbow Valley](#).
https://commons.wikimedia.org/wiki/Category:Wildfires_in_Arizona#/media/File:Arizona_Bushfire_Pyrocumulus.jpg



Goodwin Fire; 6/26/17; Photo by Christina Montiel; Credit U. S. Forest Service, Prescott National Forest
https://commons.wikimedia.org/wiki/Category:2017_wildfires_in_Arizona#/media/File:Goodwin_Fire_pic-8.jpg

Gallery Photos:



Rattlesnake Fire

https://commons.wikimedia.org/wiki/Category:Rattlesnake_Fire#/media/File:2018_04_12-18.33.25.789-CDT.jpg



Protecting brush shelter from advancing wildland fire. 7-20-11. Credit the U.S. Forest Service, Southwestern Region, Kaibab National Forest.

[https://commons.wikimedia.org/wiki/Category:Fires_in_Kaibab_National_Forest#/media/File:Archaeology_&_Heritage_2011_\(24203989_928\).jpg](https://commons.wikimedia.org/wiki/Category:Fires_in_Kaibab_National_Forest#/media/File:Archaeology_&_Heritage_2011_(24203989_928).jpg)

Gallery Photos:



The Fuller Fire is located on the North Rim of Grand Canyon National Park began on Jun. 29, 2016, by a lightning strike. The Fuller Fire has consumed 14,385 acres. U.S. Forest Service photo.

[https://commons.wikimedia.org/wiki/Category:Fuller_Fire#/media/File:20160629-FS-UNK-0014_\(27951683183\).jpg](https://commons.wikimedia.org/wiki/Category:Fuller_Fire#/media/File:20160629-FS-UNK-0014_(27951683183).jpg)



The Fuller Fire was located on the North Rim of Grand Canyon National Park and began on Jun. 29, 2016, by a lightning strike. The Fuller Fire has consumed 14,385 acres. U.S. Forest Service photo.

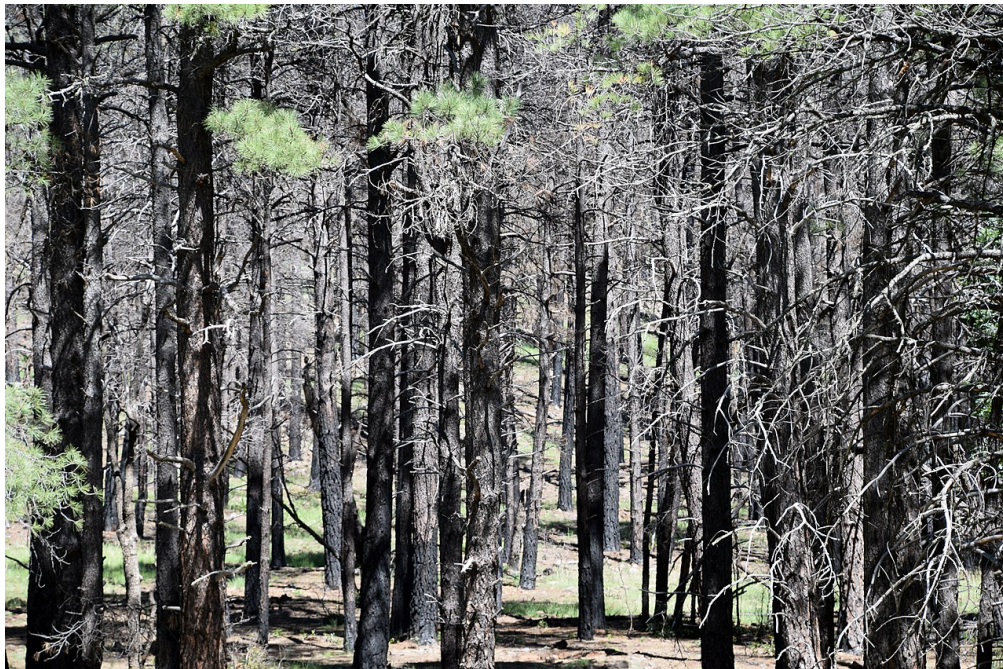
https://commons.wikimedia.org/wiki/Category:Fuller_Fire#/media/File:Fuller_Fire_08.jpg

Gallery Photos:



A firefighter begins a fire line with his drip torch on a prescribed burn near Lake Mary on 10-14-09. Drip torches contain a mixture of gasoline and diesel and help strategically place fire to manage burns. Taken by Brady Smith. Credit: USDA Forest Service, Coconino National Forest.

[https://commons.wikimedia.org/wiki/Category:Prescribed_burns_in_Coconino_National_Forest#/media/File:A_firefighter_uses_a_drip_torch_to_start_a_prescribed_burn_\(4017815052\).jpg](https://commons.wikimedia.org/wiki/Category:Prescribed_burns_in_Coconino_National_Forest#/media/File:A_firefighter_uses_a_drip_torch_to_start_a_prescribed_burn_(4017815052).jpg)



Personnel from the Forest Service and partner agencies gathered Aug. 8, 2017 to study and discuss decisions made and consequences of the Mormon Fire of 2016.

https://upload.wikimedia.org/wikipedia/commons/8/8e/Mormon_Fire_Case_Study_Staff_Ride_%2836301532452%29.jpg

Gallery Photos:



Retardant dissipates and spreads across the entrance of a fork of Oak Creek Canyon called Sterling Canyon. Taken on 5/22/14 by Brady Smith. Credit: U.S. Forest Service, Coconino National Forest.

[https://commons.wikimedia.org/wiki/Category:Slide_Fire#/media/File:Slide_Fire_heli_drop_\(14062000887\).jpg](https://commons.wikimedia.org/wiki/Category:Slide_Fire#/media/File:Slide_Fire_heli_drop_(14062000887).jpg)



Firefighters on the frontline battlegrounds of the Taylor Fire. Taken on 8-18-09 by the Northern Arizona Incident Management Team. Credit: USDA Forest Service, Coconino National Forest.

[https://commons.wikimedia.org/wiki/Category:Taylor_Fire#/media/File:Firefighters_on_the_front_line_of_Taylor_Fire_\(3910837444\).jpg](https://commons.wikimedia.org/wiki/Category:Taylor_Fire#/media/File:Firefighters_on_the_front_line_of_Taylor_Fire_(3910837444).jpg)

Gallery Photos:



Fire crews from @KaibabNF , @PonderosaFire & Camp Navajo combine efforts containing 3.6 Acre #wildfire 6 miles south of Parks.

[https://commons.wikimedia.org/wiki/Category:2017_wildfires_in_Arizona#/media/File:Wildfire_in_parks - Kaibab NF - October 2017.jpg](https://commons.wikimedia.org/wiki/Category:2017_wildfires_in_Arizona#/media/File:Wildfire_in_parks_-_Kaibab_NF_-_October_2017.jpg)