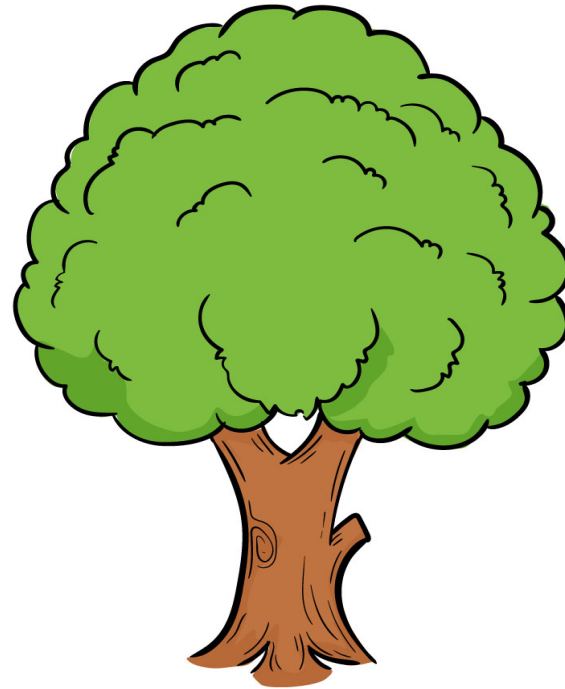
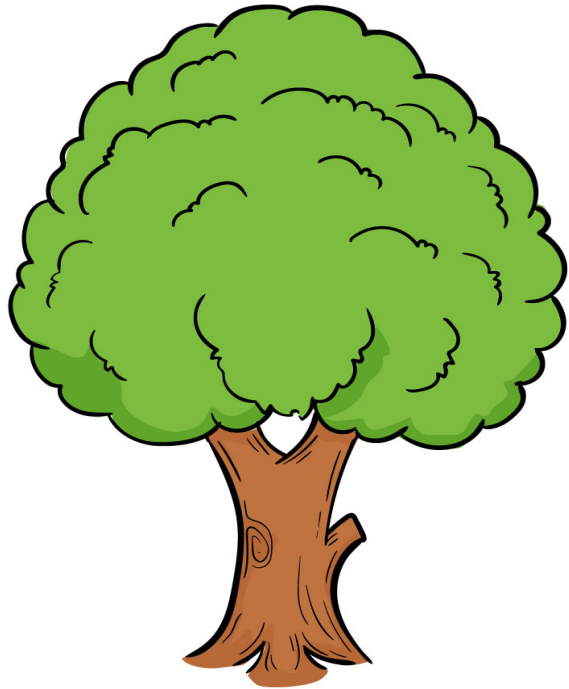


Images for Urbanization Activity

(trees cut 30)



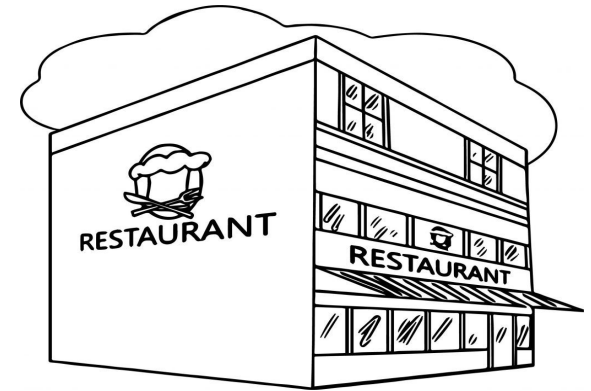
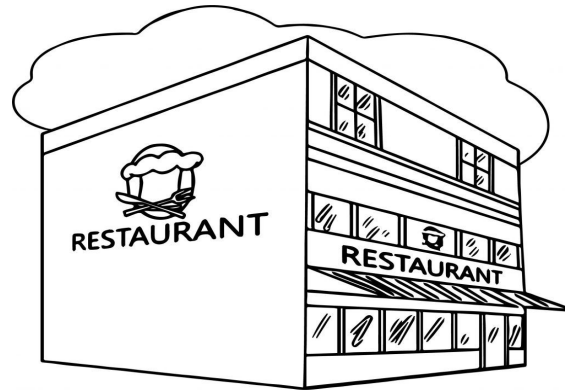
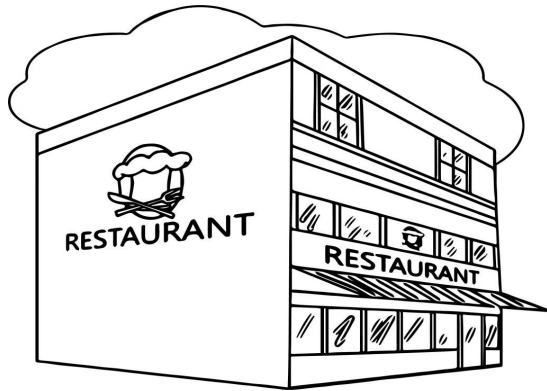
people cut 28 https://en.m.wikipedia.org/wiki/File:Mr._Smiley_Face.svg Each smiley face equals 1000 people in the sq. mile.



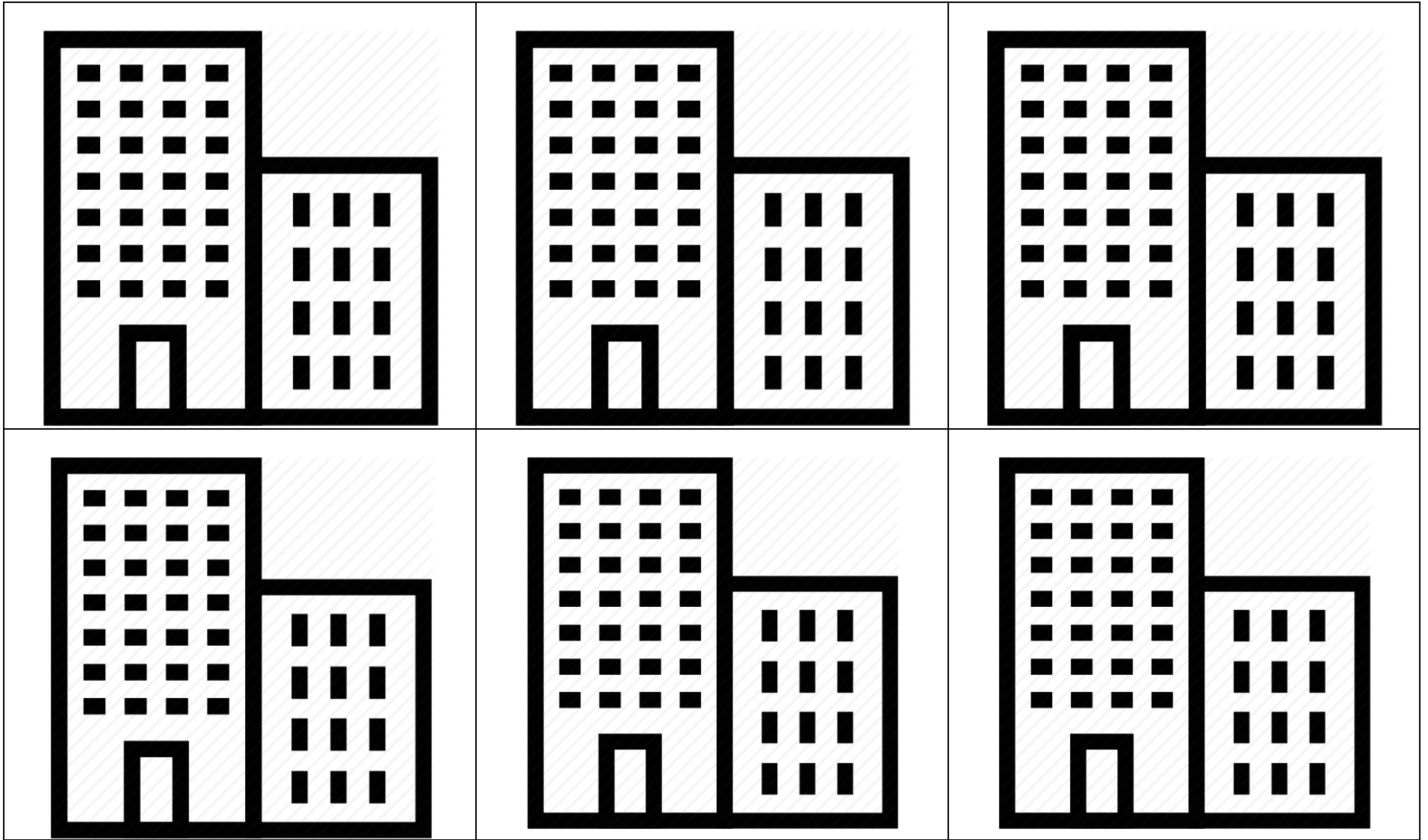
other city features



other city features



other city features



Option One Storyboarding Urbanization

Names _____

You will be split into groups of 3 students. You will storyboard the growth of a city. Using your art supplies, you are to draw 6 scenes in the city's growth. You are to put captions below or above each scene explaining the changes in the landscape and environment.

Things to Consider

- This should be a real city.
- You need to know the date the city was established and then make your storyboard scenes every 20-40 years after that. End with a date close to now.
- Bonus points for doing a city in Arizona!
- You are welcome to search for real photos and information, but the storyboard should be your own artwork....no cutting and pasting from the Internet.
- Captions need to be grammatically correct.

Scoring Guide

Requirements	Points Possible	Points Scored	Comments
6 Scenes show urbanization of a city	30		
Captions explain the changes in the landscape and environment	30		
Neatly Done	20		
Grammatically correct captions	20		
Total	100		
Bonus for AZ city	10		

Option Two

Buckeye Urbanization Over Time

Names _____

You will be split into groups of 3-5 students. You will make replica of an assigned picture of Buckeye, Arizona. Using your art supplies, you are to recreate what you see in the picture and make inferences on what Buckeye looked like during the time of your assigned photo. You will then write a summary

Things to Consider

- In your summary paragraph(s), discuss:
 - Describe your replica of Buckeye and the time period it reflects
 - Infer as to what kind of impact the environment of Buckeye had on its growth
 - Explain why the urbanization happened
- Summaries need to be grammatically correct.
- Summaries and replica need to be neatly done.

Scoring Guide

Requirements	Points Possible	Points Scored	Comments
Replica accurately represents your assigned picture	30		
Summary paragraph has at least 8 sentences	30		
Neatly Done	20		
Summary has correct grammar and complete sentences	20		
Total	100		