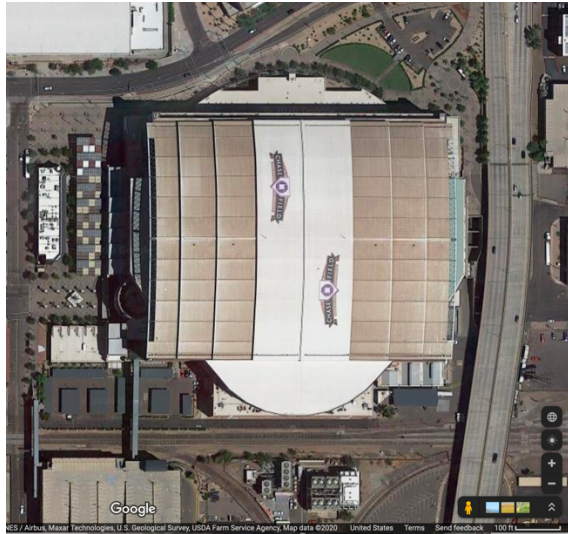


Aerial Photograph of Chase Field, Downtown Phoenix

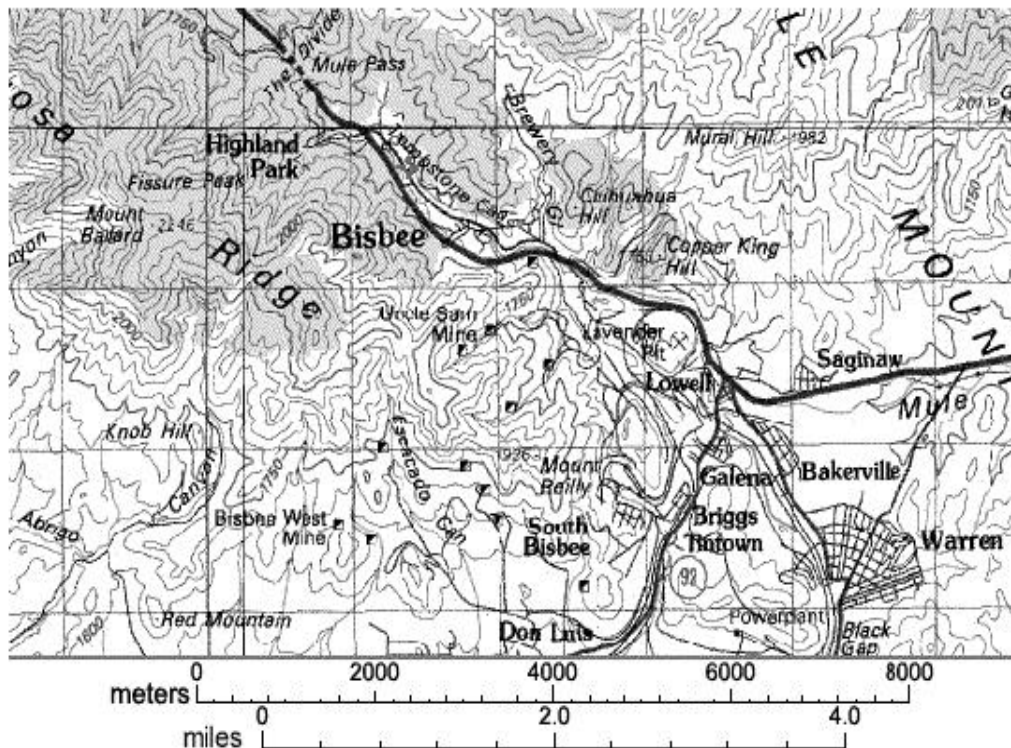
The left image is an aerial view taken from above by a satellite and is found on Google.com. The photo on the right is an oblique view of Chase Field you might see flying into the airport.



50 meters _____

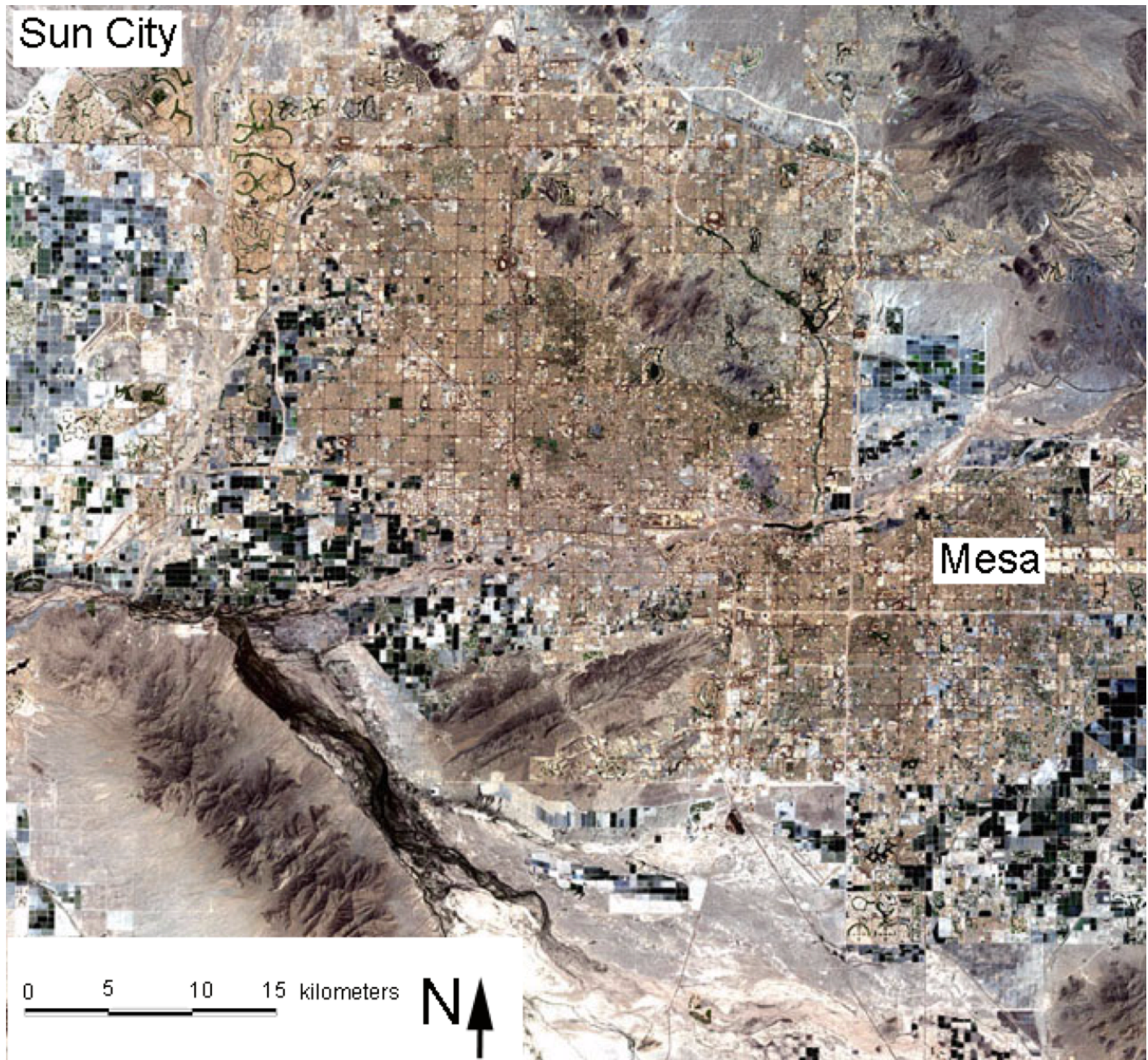
Topographic map of Bisbee, Arizona and Vicinity

This topographic map is made at a scale that allows you to see how cities and roads relate to nearby rivers and hills.



Satellite Image of the Phoenix Area

This image was taken from a satellite in orbit, tens of thousands of miles high. The satellite image is large enough that you can see really large features like mountains and some roads, lakes, golf courses, parks and agricultural fields.



Aerial Photograph of Hollywood Sign Above Hollywood, California

This photograph is taken from an airplane so that you are able to see individual buildings and really big signs.



Aerial Photography of a School and Surrounding Neighborhood

This photograph is taken from an airplane so that you are able to see individual buildings.



Aerial Photograph of Disneyland California

This photograph is taken from an airplane so that you are able to see larger buildings and the overall circular nature of Disneyland.



Aerial Photograph of Arizona Mills Mall, Tempe, Arizona

This photograph is taken from an airplane so that you are able to see the mall, parking and nearby freeways.



Satellite Image of Imperial Valley, California and its border with Mexico

This image was taken from a satellite in orbit, tens of thousands of miles high. The satellite image is large enough that you can see large features like mountains (dark brown), the Salton Sea (black), desert washes (brown), and sand dunes (white). The bright red color shows well-watered fields. Those in California are well watered, but those in Mexico do not receive as much water. The border is where the red meets the brown on the map.

